

CHAIN HOIST



RH-250 ▶



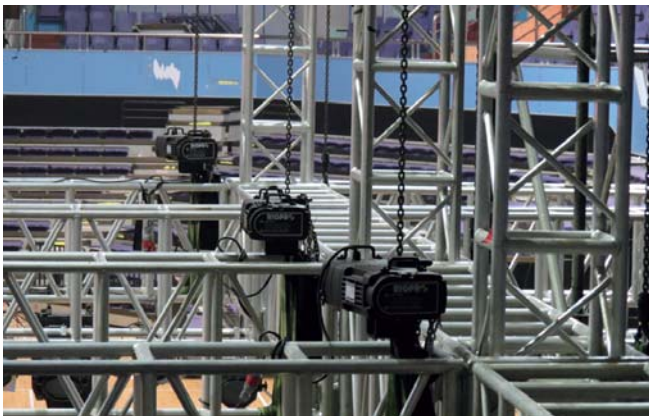
RH-500 ▶



RH-1000P ▶
RH-1000
RH-1000LV
RH-1000CV



RH-2000 ▶



Item	Description
RH-2000	2 Ton Chain Hoist, Direct Control.
RH-1000P	1 Ton Chain Hoist, With Micro Switch Positioning.
RH-1000	1 Ton Chain Hoist, Direct Control.
RH-1000LV	1 Ton Chain Hoist, Low Voltage Control.
RH-1000CV	1 Ton Chain Hoist, Direct Control, Convertible Voltage 220 / 380V.
RH-500	500 Kgs Chain Hoist, Direct Control.
RH-250	250 Kgs Chain Hoist, Direct Control.

ALL-NEW “MICRO SWITCH POSITIONING” FOR CHAIN HOIST - A BETTER RIGGING CHOICE YOU SHOULDN'T MISS OUT.

RH-1000P is designed for installation where chain lifting or hoist climbing to precise position is required. This new model offers the lifting operation an alternative manner in position control over simple and quick steps of maneuver.



CONVENIENT & FAST SETTING

Each RH-1000P chain hoist comes with built-in micro switches and is equipped with up and down rubber blocks. Activate this system is just simple as 1-2-3: slide the rubber block to the desired position where you want to stop the moving, run the chain hoist with ordinary DC (direct control) controller, and then the lifting or climbing will stop while rubber block touch the micro switch on the nylon chain guide. No complicated setting; it's no brainer.

PRECISE & SAFE

Whilst rubber block is fixed and running to touch the micro switch, the hoist will stop travelling immediately without delay, even the controller is set on working in this stage. In the case of multiple chain hoists in operation, as soon as the micro switch is triggered on each unit, hoist won't move an inch which ensures the fidelity to entire system's stability and safety.



Rubber block has a dia. 5mm perforate hole, leaving a cable tie to anchor the rubber block on chain tightly from slipping. Palm-size rubber block is handy to grip and slide. Damage-free on chain link and durable for frequent use.



CHAIN HOIST

Rigpro RH-1000 is a three phase chain hoist, loading rated for 1000 kgs, and built for rigorous entertainment rigging environment. RH-1000 is available with DC (Direct Control) and LVC (Low Voltage Control) version, and operates in both upright and inverted positions.



CE

OUTSTANDING FEATURES:

- Gravity die-casted aluminum, matt-black non reflective finish chassis for rigid, light-weighted, durable and low visibility.
- Epoxy black powder coated chassis is featuring corrosion-resistance, and with fine gasket and mechanical design, the complete unit turns to be IP54 rated.
- Enhanced Nylon chain leading plate ensures the chain links properly fit into the lift wheel, and eliminates the possibility of jamming, as well as protects the lift wheel from wet and dirt.
- Heavy-duty DC brake automatically gets engaged in the event of power failure, requiring very little maintenance and only minor periodic adjustments.
- Hook is made of drop-forged high tensile steel with heat treatment, allowing 360 degree swiveling, and equipped with safety latch to ensure proper rigging the load.
- Equipped with duty cycle ED 40% high efficiency, lightweight and robust motor, running the chain hoist quietly and steady.
- Operates on three phase voltage of 400V/50Hz, and LVC is 110V as standard. Other voltage for DC and LVC version is available upon request.
- Conforms to FEM 2m / ISO M5 classification, covering a wide range of applications.
- Average operational noise is within 75dB, quietly working and less noisy.



CHAIN GUIDE

- Made of robust material, enhanced Nylon, and comply with housing design to make sure the load chain operating smoothly.
- The forward-curve shape of enhanced Nylon keeps operating chain in the central position, away from getting stuck in the farther sides.
- RH-250 pulley type chain guide.



RH-1000 / RH-500



RH-250

MECHANICAL OVERLOAD DEVICE

- Gear is made of alloy steel with heat treatment for steady operation and less wearing and tearing. Fine-ground gear makes engagement precisely with less operation noisy.
- While generated torque is over the friction torque, the overload mechanism will trigger, in which motor keeps running but slipping clutch hold back the hoist from further lifting for the sake of safety.



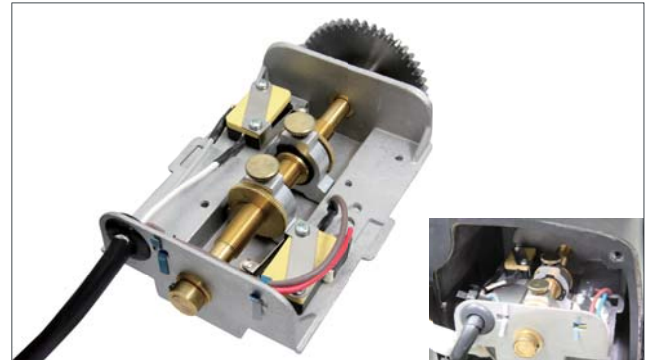
HOOK

- Upper hooks apply material SF45C to cast which allow swiveled 360 and are equipped with safety latch to enhance the loading safety.
- Lower hooks apply material SF45C to cast which allow swiveled 360 and are equipped with safety latch to enhance the loading safety. Connection plate is bend and formed by high strength steel for excellent safety.



GEAR LIMIT SWITCH (LVC VERSION ONLY)

- It can be handy adjusted to the required position, setting the chain travelling limits and offering the preventable method for hoist from over winding and damage.



ELECTROMAGNETIC DISK BRAKE

- Electromagnetic disk brake will brake synchronously while the power is off, ensuring the operation safety while loading.

YOUTUBE

OVERVIEW FOR
RIGPRO ELECTRIC CHAIN HOIST

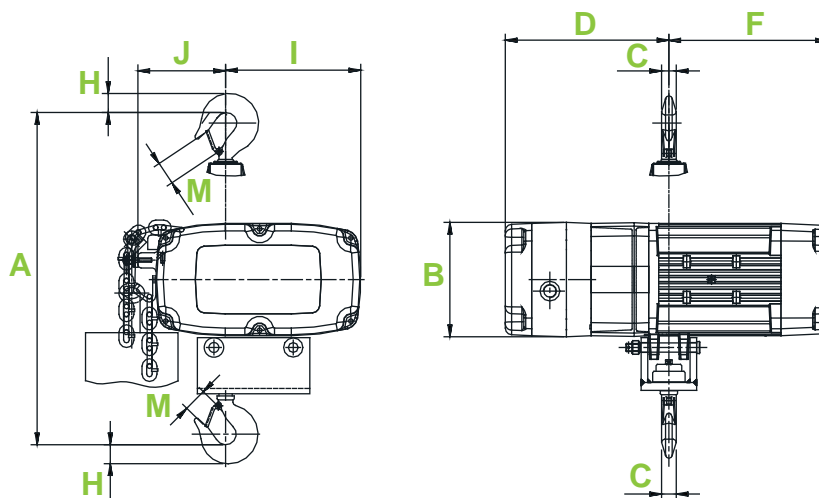


SAFETY FEATURES

- DC Motor Brake: With two-side single disk brake, electro-magnetic brake actuates synchronously in the event of power failure to ensure the operation safety while loading.
- Overload Slipping Clutch: Protects the hoist from damage of overload, and ensures the life-span of chain hoist.
- Over-Heat Protection: With built-in heat detector, when motor's inside working temperature reaches 140(±5) Celsius degree, the protection mechanism will trigger, and not allow lifting the load. Instead, it permits coming down to release the load.
- Gear Limit Switch (only applied for LVC version): Upper and lower limit switches are fitted to switch off the power simultaneously in the case of over lifting or lowering position.
- Phase Protection (only applied for LVC version): Built with phase error relay, in case of any phase missing or incorrect, the machine will not be in active, ensuring the safety and durability to all components.

Capacity (Kg)	Model	Speed (m/mim) 50Hz/60Hz	Fall No.	Load Chain (Dia x Pitch) (mm)	Motor (Kw x Pole)	Weight of hoist (Kg)
2000	RH-2000	3.3 / 4.0	2	Ø 7.1 x 20.2	1.5 x 2	62
1000	RH-1000P	3.3 / 4.0	1	Ø 7.1 x 20.2	0.75 x 4	47
	RH-1000	3.3 / 4.0	1	Ø 7.1 x 20.2	0.75 x 4	47
	RH-1000LV					
	RH-1000CV					
500	RH-500	4.0 / 4.8	1	Ø 6.3 x 19.1	0.40 x 4	42
250	RH-250	4.0 / 4.8	1	Ø 4 x 12.0	0.28 x 4	30

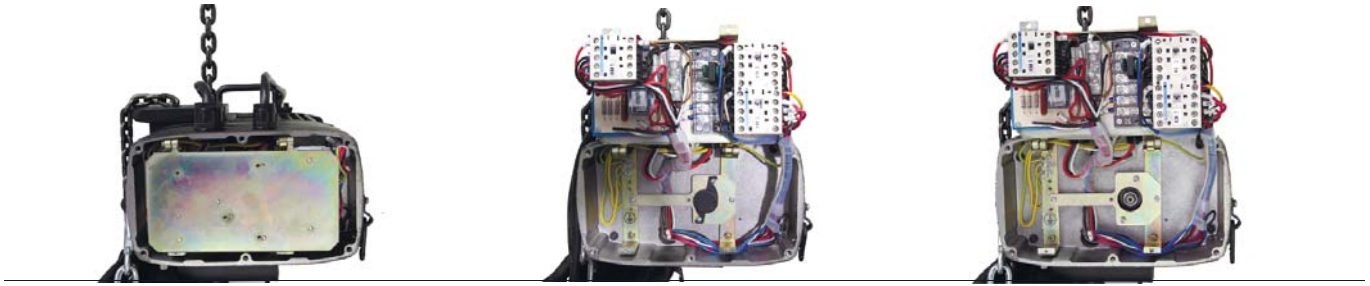
DIMENSIONS: (MM)



Model	Dimension (mm)								
	A	B	C	D	F	H	I	J	M
RH-250	410	135	18	205	175	28	165	85	25
RH-500	600	156	23	247	221	33	185	105	30
RH-1000	650	156	23	247	221	33	185	105	30
RH-1000LV	650	156	23	247	221	33	185	105	30
RH-1000CV	650	156	23	247	221	33	185	105	30
RH-1000P	650	156	23	247	221	33	185	105	30
RH-2000	860	170	27	275	240	39	170	170	30

MAGNETIC CONTACTOR & CLUTCH ADJUSTMENT

- High performance fuse circuit breakers are fastened in a rotatable bracket for easy maintenance and inspection.
- The clutch torsion can be adjusted through a torque tool by a qualified technician. Easy to access and calibrate.



GRADE 80 ALLOY CHAIN

Premium quality and high strength alloy chain, heat treated, used in a variety of sling and tie down applications. For overhead lifting applications, only Grade 80 alloy chain should be used.

IDENTIFICATION

Shall have periodic embossing for identification purpose. The embossing shall include the manufacturer's identification mark or symbol, the traceability code or date code, and the grade indicator.

FEATURES:

- Made from carbon steel superior alloy, grade 80 chain load chain is precise calibrated and heat treated for maximum strength and wear resistance.
- Safety factor 7:1, greater durability and safety.
- Black phosphate finish for corrosion resistance and low-key.

Part Number	Description
CHC-7.1	7.1 x 20.2 mm chain, Grade 80, for load capacity 1000 kgs & 2000 kgs hoist, per meter weights 1.12kgs.
CHC-6.3/19.1	6.3 x 19.1 mm chain, Grade 80, for load capacity 500 kgs hoist, per meter weights 0.89 kgs.
CHC-4.0	4.0 x 12.0 mm chain, Grade 80, for load capacity 250 kgs hoist, per meter weights 0.35 kgs.



ENTERTAINMENT RIGGING CHAIN HOIST

CHAIN HOIST FLIGHT CASE

Rigpro chain hoist flight case is designed with several features for greater protection over transit. Made of 10mm thickness robust plywood with max durability. Stackable for less storage space. Internal layout is to set the chain hoist firmly and provide sufficient compartment for chain and power cable. Superior butterfly latches lock up lid and main frame tightly. Large spring-loaded handle for convenient grip and handling. Travel easily with four castor and two of them with brake. Robust and tough. It helps show tour to move in/out the chain hoist fast and extra secure to the equipment.



Four dia. 10cm swivel castors for ease of transit; two of them with brake.



Enhanced and rounded corner to brace and withstand unexpected collision.



Hinged cover with multi-position lid stay.



Lid is reinforced with hinged and two support lid stays .



Recessed butterfly latched for secure lock.



Heavy-duty recessed flip grip for greatest handling.



Wood partition with black painting for extra strength and greatest support.

Item	Description
RH-1000-1	FLIGHT CASE FOR RH-1000 & 500 (standard compartment for 20M chain; customized size for longer chain upon request)